



CVH-500D 2A / CV-350 圓刀. 分條刀研磨機
CIRCULAR KNIVES & SLITTING KNIVES GRINDING MACHINE



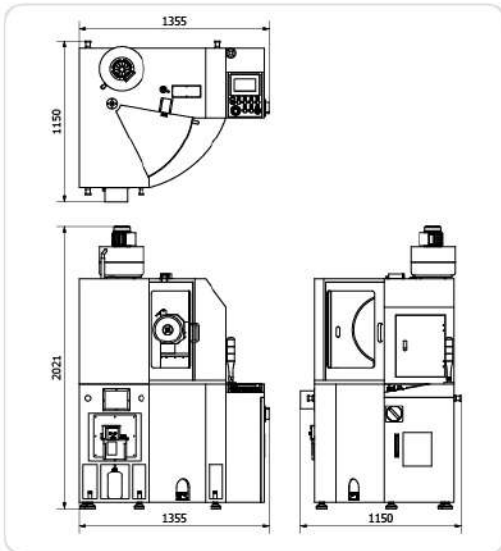
CVH500D 2A

圓刀. 分條刀研磨機 Circular Knives & Slitting Knives Grinding Machine

◆ Grinding Samples 研磨產品範例



Machine Dimensions / 機械尺寸圖



Z-axis controlled by servo motor which can set the grinding amount & number of grinding times freely. Z軸由伺服馬達控制，可自由設定研磨量及研磨次數。



◆ Touch Control panel
觸控控制面板



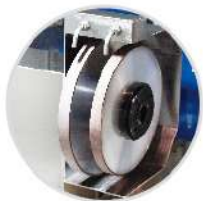
Patent certificates
專利證書

X-axis controlled by servo motor. X軸由伺服馬達控制

Standard Accessories / 標準配備

Fully enclosed splash guard 全密式防護罩	1 pc 式
Cooling system 冷卻系統	1 set 組
Blade clamp 刀片夾盤 $\phi 90\text{mm}$	1 set 組
Working lamp 工作燈	1 set 支
Plane grinding wheel 平面砂輪	1 set 組
Flange 法蘭	1 set 組
Tool box 工具箱	1 set 組
Electric Lubrication System 電動潤滑系統	1 set 組

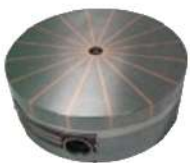
Optional Accessories / 選購配件



CBN Plane Grinding Wheel
CBN平面砂輪



Plane Grinding Wheel
平面砂輪



Round Permanent Magnitic Chunk
圓型永磁盤



Oil Mist Recycle Device
油霧回收機



Rotary Pneumatic Cylinder 迴轉氣壓缸

Specifications / 規格表

Grinding range/circular knife diameter 研磨範圍/圓刀外徑	$\phi 65 \sim \phi 500\text{mm}$
Swivel angle 研磨刀具角度	$\pm 30^\circ$ (For $\phi 500$) / $\pm 45^\circ$ (For $\phi 65 \sim \phi 400$)
Z-axis Motor Z軸馬達	AC Servo Motor 伺服馬達
X-axis Moter X軸馬達	AC Servo Motor 伺服馬達
Actual grinding wheel diameter 使用砂輪直徑	$\phi 180 \sim 205\text{mm}$
Grinding wheel motor 砂輪馬達	4kw
Grinding wheel rotation speed 砂輪轉速	1000 ~ 4500rpm
Motor of cooling system 冷卻系統馬達	0.13kw
Installed power 安裝電力	5kw
Net weight/gross weight 淨重/毛重	1269 / 1385kg
Packing dimensions 裝箱尺寸	165x129x201cm

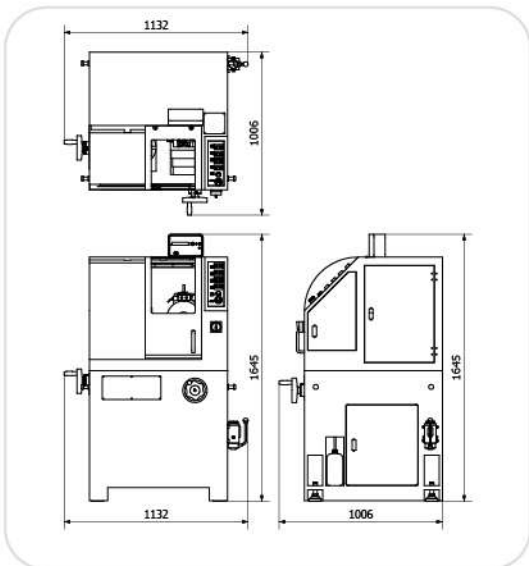
CV350

圓刀、分條刀研磨機 Circular Knives & Slitting Knives Grinding Machine

◆ Grinding Samples 研磨產品範例



Machine Dimensions / 機械尺寸圖



Optional Accessories / 選購配件



Grinding Wheel Dresser
砂輪修整座



Display Optical Ruler Set
顯示器光學尺組



Wheel Balancing Stand
平衡座



Grinding Wheel Balance Bar
砂輪平衡桿



CBN Plane Grinding Wheel
CBN平面砂輪



■ X axis is hand feed. X軸為手動控制進刀。

Standard Accessories / 標準配備

Fully enclosed splash guard 全密式防護罩	1 pc 式
Cooling system 冷卻系統	1 set 組
Blade clamp 刀片夾盤 $\phi 90\text{mm}$	1 set 組
Working lamp 工作燈	1 set 支
Plane grinding wheel 平面砂輪	1 pc 個
Flange 法蘭	1 set 組
Tool box 工具箱	1 set 組
Manual Lubrication System 手動潤滑系統	1 set 組

Specifications / 規格表

Grinding range/circular knife diameter 研磨範圍/圓刀外徑	$\phi 65 \sim \phi 350\text{mm}$
Swivel angle 研磨刀具角度	$\pm 45^\circ$
Electric control of X-axis reciprocation X軸往復電動控制	50mm
Actual grinding wheel diameter 使用砂輪直徑	$\phi 205\text{mm}$
Grinding wheel motor 砂輪馬達	1.5kw
Grinding wheel rotation speed 砂輪轉速	3800rpm
Motor of cooling system 冷卻系統馬達	0.13kw
Installed power 安裝電力	2 kw
Net weight/gross weight 淨重/毛重	841 / 924kg
Packing dimensions 裝箱尺寸	120x124x129cm



易研精密機械有限公司

EYAN MACHINE TOOLS CO., LTD.

台中市南屯區精科七路5號

No.5, Jingke 7th Rd., Nantun Dist., Taichung City 408, Taiwan

Tel: +886-4-2355-3111 Fax: +886-4-2355-2111

E-mail: eyan@eyan.com.tw

eyan@eyan.com

<http://www.eyan.com>

[//www.hsssaw.com](http://www.hsssaw.com)

